

HLF - RM

Warm Air Heater with high-efficiency fan

Galvanized steel plate

Heating medium oil EL or gas



Application:

- Exhibition halls
- Construction site heating
- Site drying
- De-icing
- Event rooms
- Marquees
- Airplane hangars
- Horticulture
- Grain drying
- Greenhouses
- Rooms for commercial use
- Industrial halls
- Storage rooms
- Agriculture
- Centres of logistics
- Production facilities
- Protection spaces
- Sports halls
- Stable heating
- Tennis halls
- Air domes
- Event tents
- Consumer markets
- Workshops

Mobile, strong, reliable:

Our HLF are optimally steerable with high load-bearing capacity (narrow doors and building sites, difficult grounds). High safety in supply, quick heat at the right place by targeted air steering. Checked by Safety Standards Authority as per DIN EN 13842.

Approved standard technology:

- Oil burner
- One-run filter with quick extractor fan
- Switch box
- High-efficiency fan for high air capacity and pressure
- Heat exchanger made of steel, extremely heat-resistant
- Double layer outer casing to insulate against heat losses
- Strong chassis for difficult grounds
- Can be moved by crane
- Varnish possible in any RAL colour
- Recirculated air condition

Configuration by request:

- Gas blower
- Retrofit kit for oil pre-heating
- Burner hood with oil drip tray
- Oil drip tray and oil tank
- Wet room thermostat with 10 m cable and connection plug
- Exhaust system
- Hoses for hot air
- Hose connection for recirculation mode
- Blow out adapter
- Front deflection pulley
- Pockets for fork lift truck

GUSTAV NOLTING GmbH

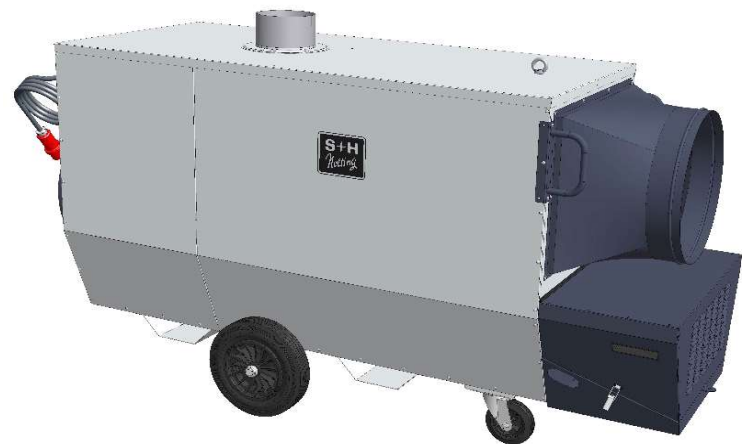
Orbker Straße 38 | D-32758 Detmold

Phone +49 (0) 52 31 . 60 01-0

Fax +49 (0) 52 31 . 60 01-51

info@gustav-nolting-gmbh.de

www.gustav-nolting-gmbh.de



HLF-120 RM Side view with optional accessories

Please see back page as well ►

Technical Data

Type	HLF-	High-efficiency fan			
		30 RM	70 RM	120 RM	150 RM
Nominal heat loading capacity	kW	31	77	120	166
Rated heat output	kW	28	70	110	150
Air output	m ³ /h	3,000	6,000	8,500	11,000
Discharge pressure	Pa	200	350	350	350
Motor capacity	kW	0.56	1.4	2.5	2.5
Electric connection	V	230	230	400	400
Length	mm	1,530	1,900	2,300	2,400
Width	mm	610	720	900	900
Height	mm	990	1,200	1,450	1,450
Diameter air exhaust port	ø A	300	450	500	600
Diameter flue gas port	ø R	150	150	200	200
Weight without burner	kilos	138	250	370	400

Subject to changes of dimensions and technical data (Version: 2020-10)

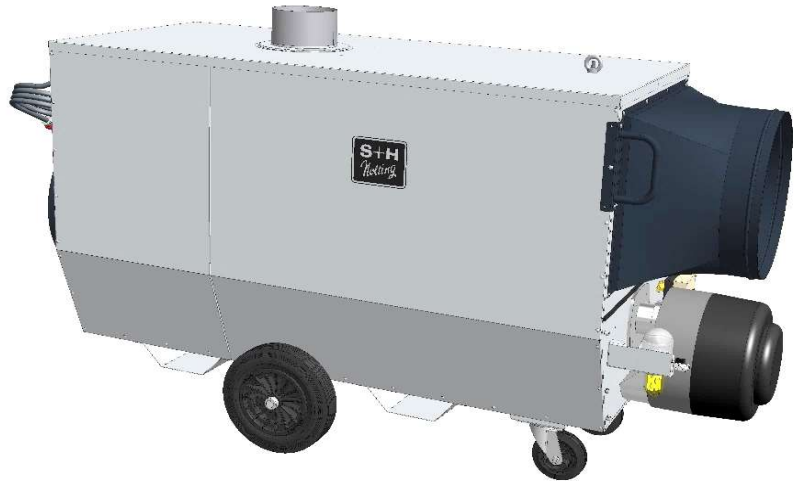
HLF - RM

Warm Air Heater with high-efficiency fan

Galvanized steel plate

Heating medium oil EL or gas

HLF with high-efficiency fan
for high air capacity and pressure.



HLF-120 RM Side view, partly with optional accessories

Illustration partly with
configuration possibilities.



Varnish possible in any
RAL colour



HLF-120 RM Fan view with recirculated air connection



GUSTAV NOLTING GmbH

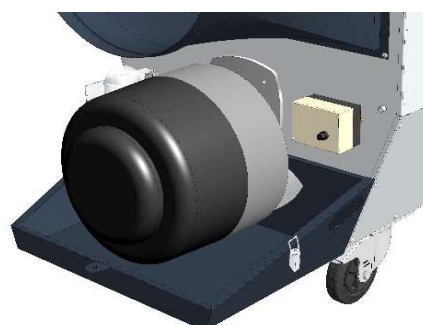
Orbker Straße 38 | D-32758 Detmold

Phone +49 (0) 52 31 . 60 01-0

Fax +49 (0) 52 31 . 60 01-51

info@gustav-nolting-gmbh.de

www.gustav-nolting-gmbh.de



HLF-30 RM Drip tray