

# NG-LF

## Warm Air Heater

Stainless Steel

Heating medium LPG / I 3 B / P  
Heat output 7.1 – 75 kW  
Air output 500 – 3,000 cbm/h  
Fully automatic



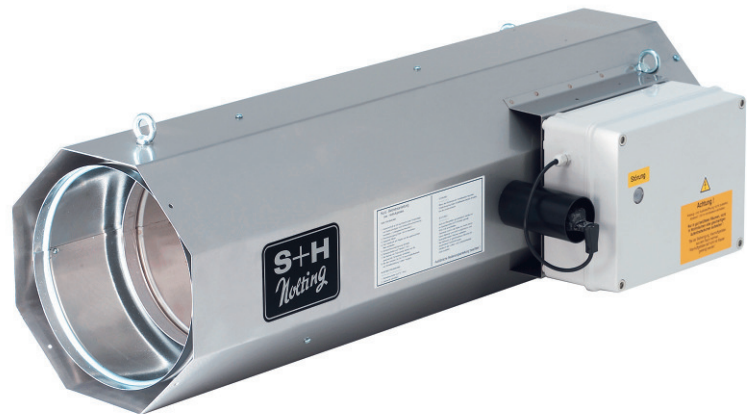
### Application:

- Exhibition halls
- Construction site heating
- Site drying
- De-icing
- Event rooms
- Marquees
- Airplane hangars
- Horticulture
- Grain drying
- Greenhouses
- Rooms for commercial use
- Industrial halls
- Storage rooms
- Agriculture
- Centres of logistics
- Production facilities
- Protection spaces
- Sports halls
- Stable heating
- Tennis halls
- Air domes
- Event tents
- Consumer markets
- Workshops

### Ready for connection to heat stables.

Fully automatic with electric ignition, infrared flame monitoring and supporting air fan.  
Operation without exhaust system with open combustion chamber.

- Casing/combustion chamber made of stainless steel
- Ready for connection with two-pin grounded plug, hose and controller
- Automatic ignition, large control range
- Low-maintenance burner
- Drip-proof switch box
- Control possible by room thermostat or ventilation control
- Three-point suspension (tags are fixed)



### GUSTAV NOLTING GmbH

Orbker Straße 38 | D-32758 Detmold  
Phone +49 (0) 52 31.60 01-0  
Fax +49 (0) 52 31.60 01-51  
info@gustav-nolting-gmbh.de  
www.gustav-nolting-gmbh.de



Technical Data						
Type	NG-LF-	10 S	20 S	30 S	50 S	75 S
Type of gas / class		LPG / I 3 B / P				
Nominal heat loading capacity	kW	7.1–10.0	12.0–20.0	15.0–30.0	24.0–50.0	37.5–75.0
Air output	cbm/h	500	900	1,600	1,600	3,000
Connected pressure	bar	0.025–0.05	0.07–0.2	0.35–1.4	0.35–1.4	0.35–1.4
Connection value	kg/h	0.55–0.78	0.93–1.55	1.17–2.33	1.86–3.89	2.91–5.83
Electric connection	V/Hz	230/50	230/50	230/50	230/50	230/50
Current consumption	A	0.3	0.37	0.85	0.85	1.4
Length of throw	m	15	20	30	30	45
Length	mm	500	800	1,000	1,000	1,150
Width	mm	450	450	455	455	510
Height	mm	315	315	315	315	360
Weight	kg	15	20	35	35	55
Product ID number		CE-0085 A0Q233				