

# HSW

## Warm Air Heater

Stainless Steel

Heating medium fuel oil EL, diesel  
 Heat output 49 – 100 kW  
 Air output 2,500 – 6,900 cbm/h  
 Fully automatic



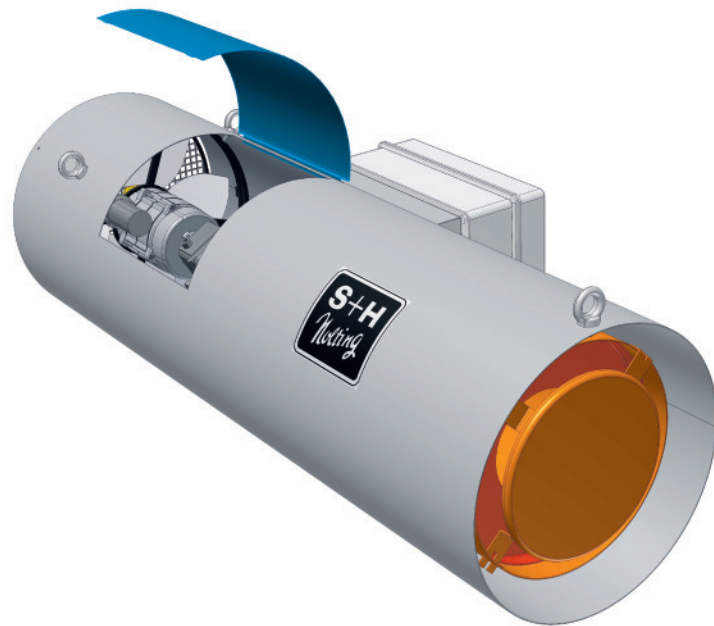
### Application:

- Exhibition halls
- Construction site heating
- Site drying
- De-icing
- Event rooms
- Marquees
- Airplane hangars
- Horticulture
- Grain drying
- Greenhouses
- Rooms for commercial use
- Industrial halls
- Storage rooms
- Agriculture
- Centres of logistics
- Production facilities
- Protection spaces
- Sports halls
- Stable heating
- Tennis halls
- Air domes
- Event tents
- Consumer markets
- Workshops

### High air output, long operating life.

Operation without exhaust system (open combustion chamber). Most suitable for heating of good ventilated spaces (no living or sitting rooms).

- Fully automatic with flame control
- Combustion chamber completely made of high heat resistant stainless steel (long lasting use)
- Current connection with two-pin grounded plug and mains supply line of 5 m
- Oil connection via one line filter (3/8" inside thread)
- Triggering by room thermostat or ventilation control possible
- Splash-proof switch box
- Quick accessible service opening for trouble-free maintenance
- Three point suspension (eyelets are fixed accordingly)



### GUSTAV NOLTING GmbH

Orbker Straße 38 | D-32758 Detmold  
 Phone +49 (0) 52 31.60 01-0  
 Fax +49 (0) 52 31.60 01-51  
 info@gustav-nolting-gmbh.de  
 www.gustav-nolting-gmbh.de



Technical Data			
Type	HSW-	55	110
Nominal heat loading capacity	kW	49.0	100.0
Air output	cbm/h	2,500	6,900
Electric connection	V/Hz	230/50	230/50
Current consumption	A	1.75	6.1
Length	mm	1,000	1,400
Width	mm	450	650
Height	mm	320	520
Weight	kg	30	58
Consumption	kg/h	4.2	8.2

Subject to changes of dimensions and technical data (Version: 2013-06)